

Making wine for the Emperor on the Roman imperial estate at Vagnari (Italy)



Maureen Carroll
Department of Archaeology

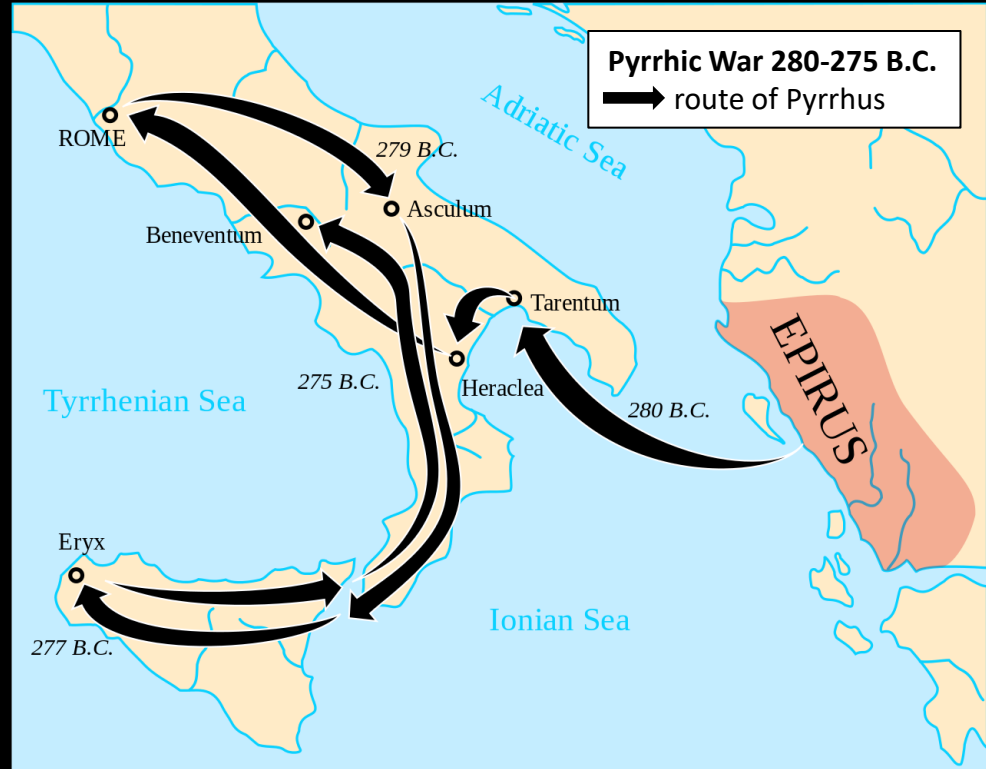




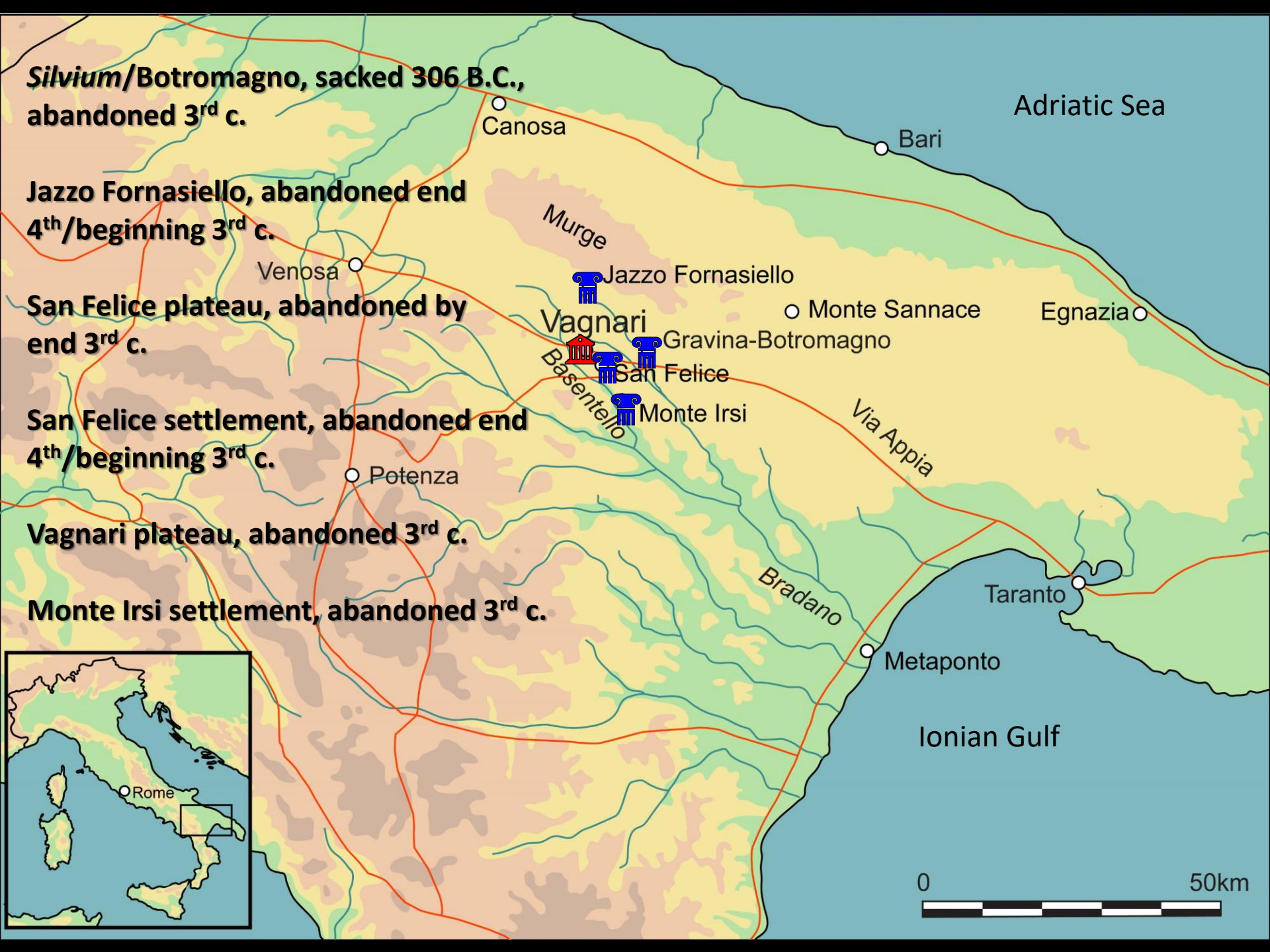
Dauni
 Peuceti
 Messapi
 Lucani

Silvium / Botromagno





ager publicus





ROMA

ARICIA
Ariccia

OSTIUM
Ostia

ANTIUM
Anzio

FUNDI
Fondi

FORMIAE
Formia

ANXUR
Terracina

CASINUM
Casino

MINTURNAE
Minturno

BENEVENTUM
Benevento

LUCERIA
Lucera

HERDONIAE
Ortona

SIPONTUM
Manfredonia

SINUESSA
Mondragone

CAPUA

AEQUUM
TUTICUM

AECAE
Troia

CANUSIUM
Canosa

BARIUM
Bari

NEAPOLIS
Polignano

PUTEOLI
Pozzuoli

CAUDIUM
Arpaia

AECLANUM
Mirabella Eclana

AQUILONIA

VENUSIA
Venosa

BUTONTI
Bitonto

EGNATIA
Egnazia

NEAPOLIS
Napoli

POMPEI

SALERNUM
Salerno

PAESTUM

VAGNARI



SILVIUM
Gravina

METAPONTUM
Metaponto

HERAKLEA
Policoro

TARENTUM
Taranto

URIA
Oria

BRUNDISIUM
Brindisi

LUPIAE
Lecce

HYDRUNTUM
Otranto

VELIA
Ascea

SYBARIS
Sibari



Via Appia Via Appia Traiana

0 50 100

VIA APPIA

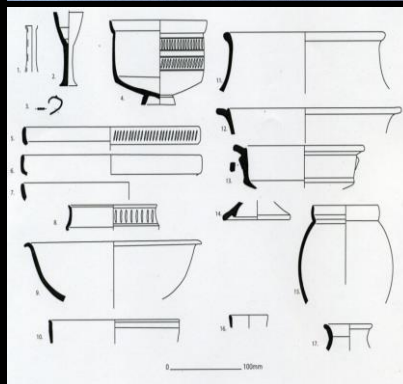


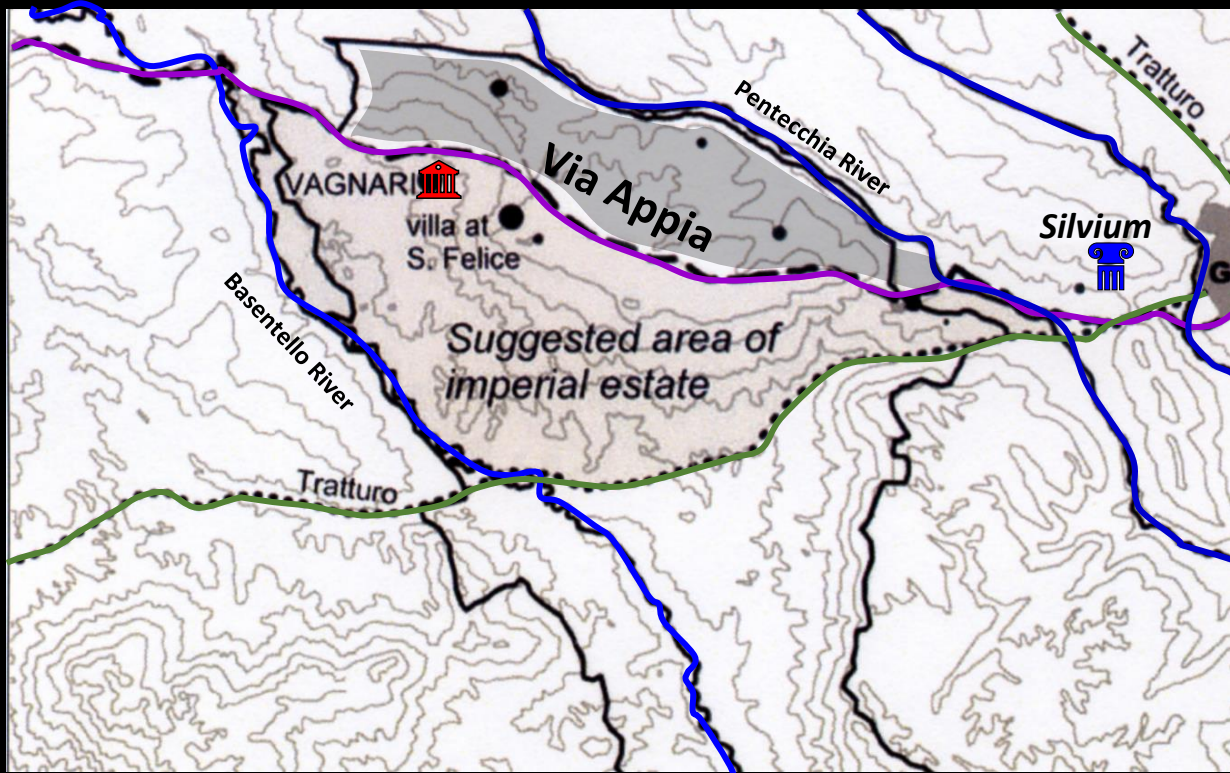
Centuriation

Silvium / Botromagno:
second half 2nd c. B.C. new villa &
subsidiary buildings, new settlers; ca. 80-70
B.C. abandoned

Vagnari vicus:
2nd c. B.C. new settlement/farm, ends mid-
to late 1st c. B.C.

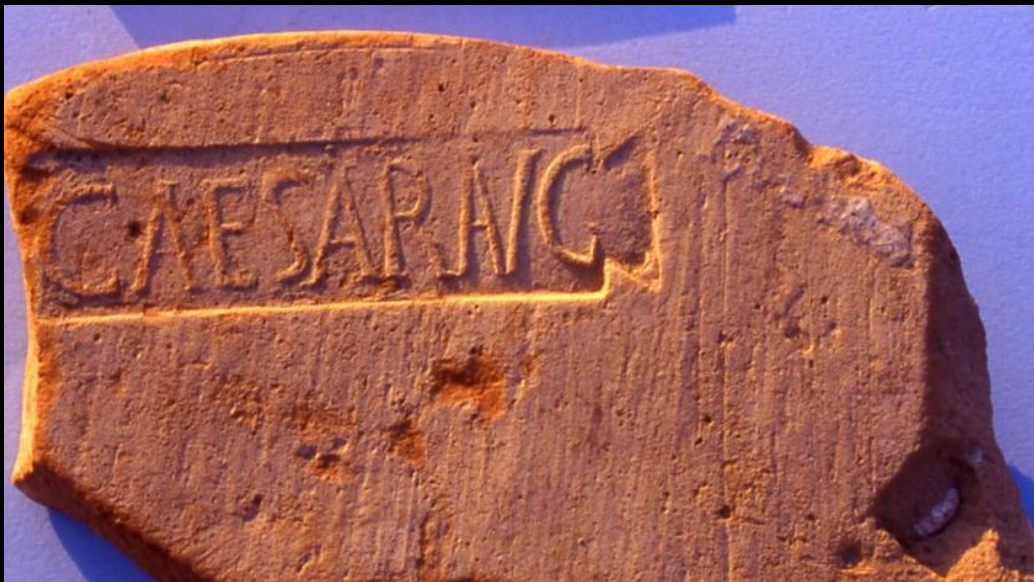
Monte Irsi:
second half 2nd c. B.C. new villa built over
ruins





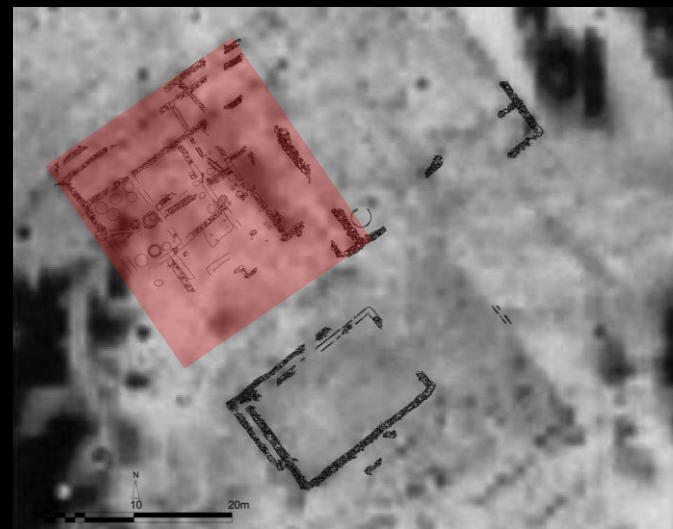
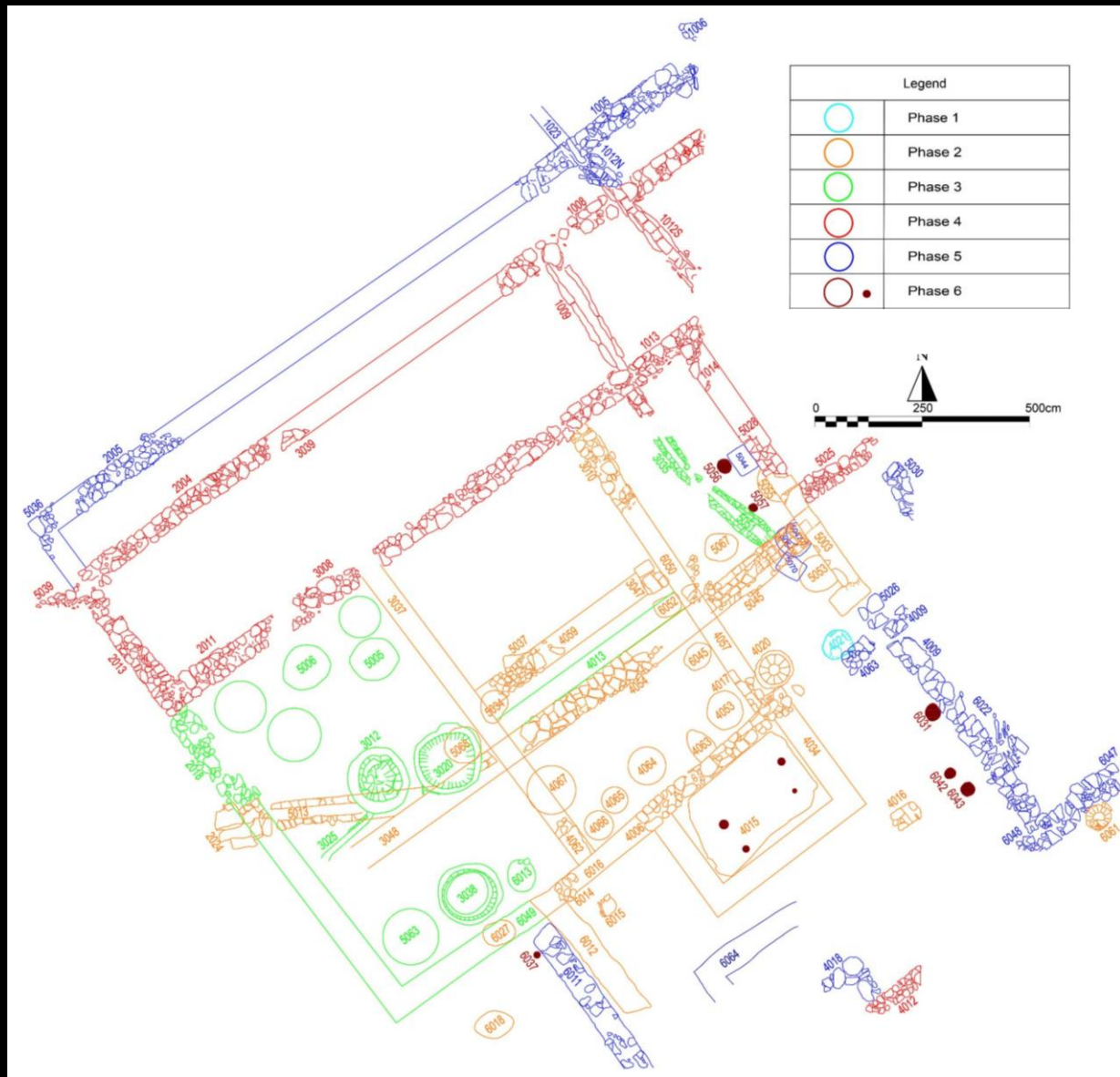
Field survey and surface collection in 1999, 2000 and 2001 revealed the existence of the Vagnari site and the possible extent of the Imperial estate (ca. 25-30 km² in size --- or larger).

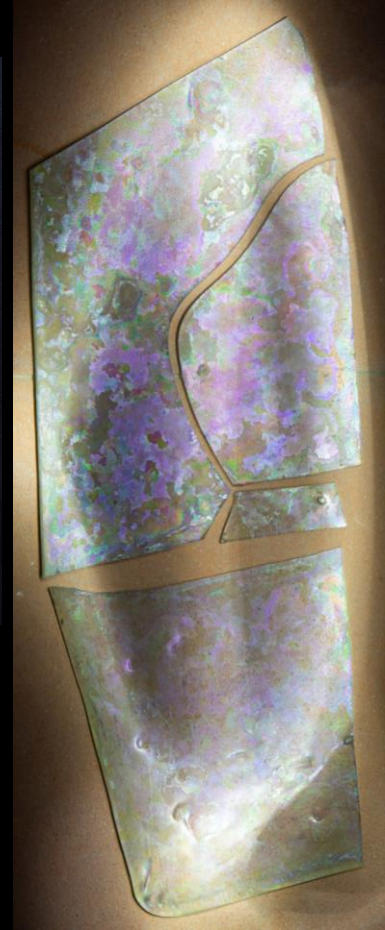
Caesar Aug(ustus) and Gratus, slave of Caesar





vicus
necropolis





What useful product is there which not only does not grow in Italy, but even grow to perfection? What spelt shall I compare to the Campanian, what wheat to the Apulian, what wine to the Falernian, what oil to the Venafran?

The trains of asses are usually formed by the traders, as, for instance, those who pack oil or wine and grain or other products from the region of Brundisium or Apulia to the sea in donkey panniers.

Varro, *On Agriculture* 1.2.5; 2.6.5 (ca. 37 B.C.)



1st c AD:

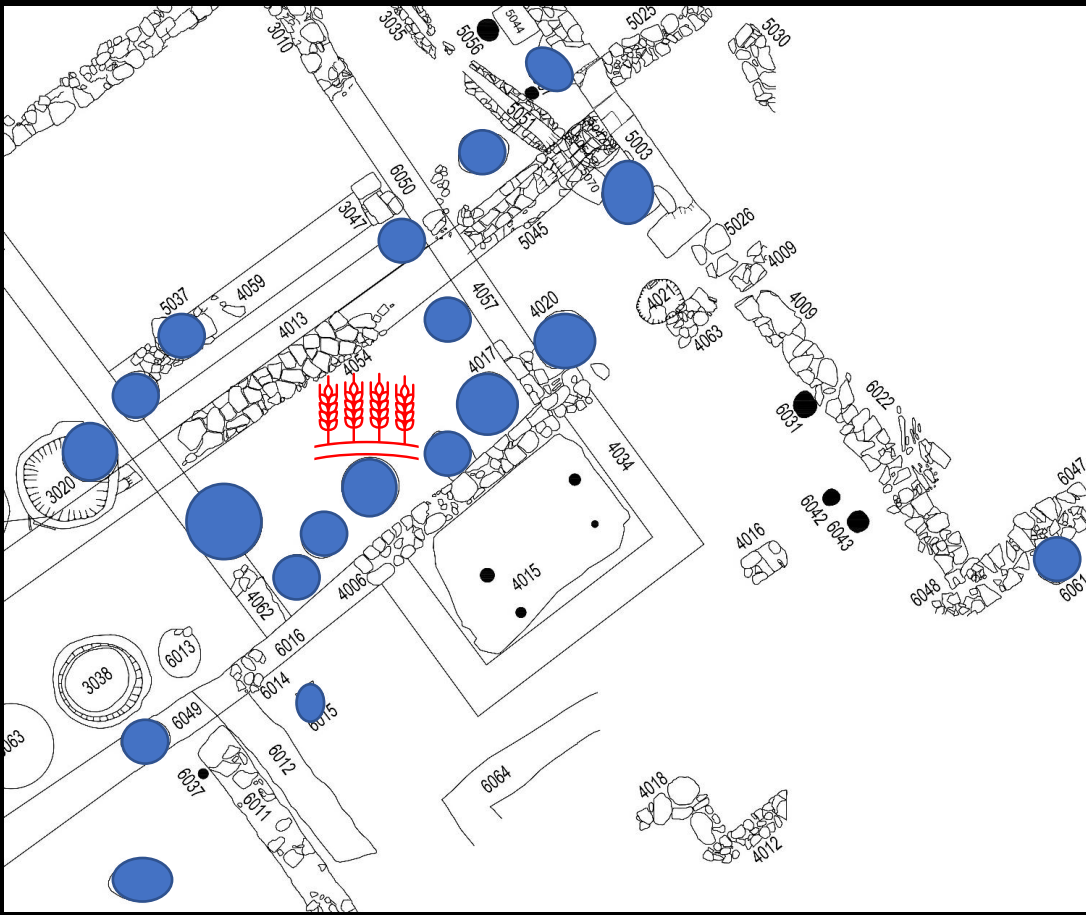
G, B, FTW

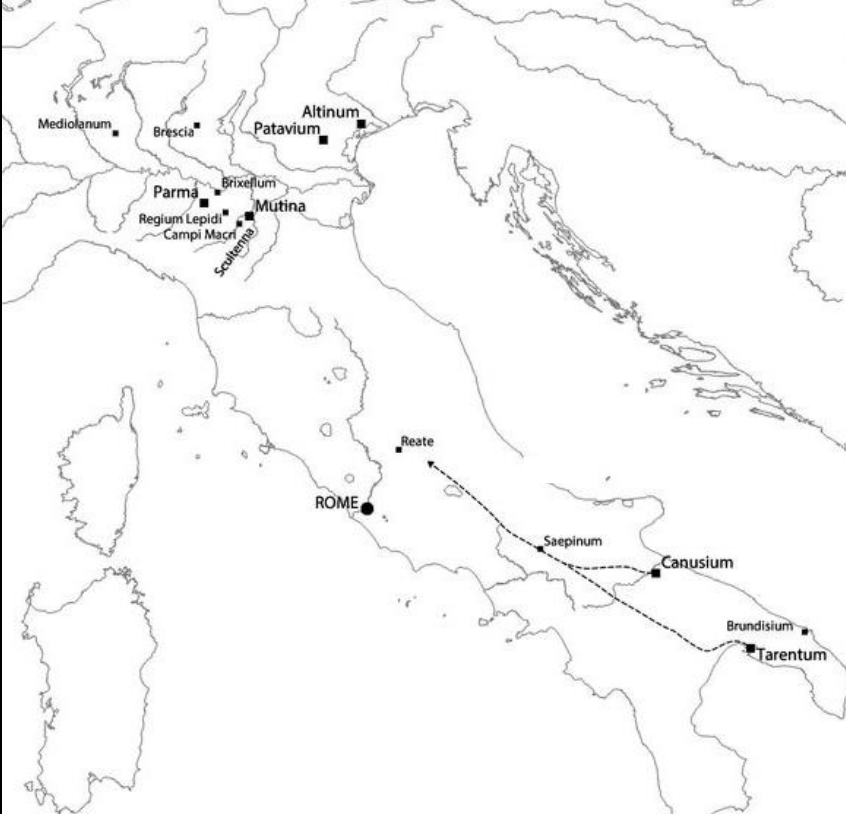
2nd c. AD:

G, FTW, B

3rd c. AD:

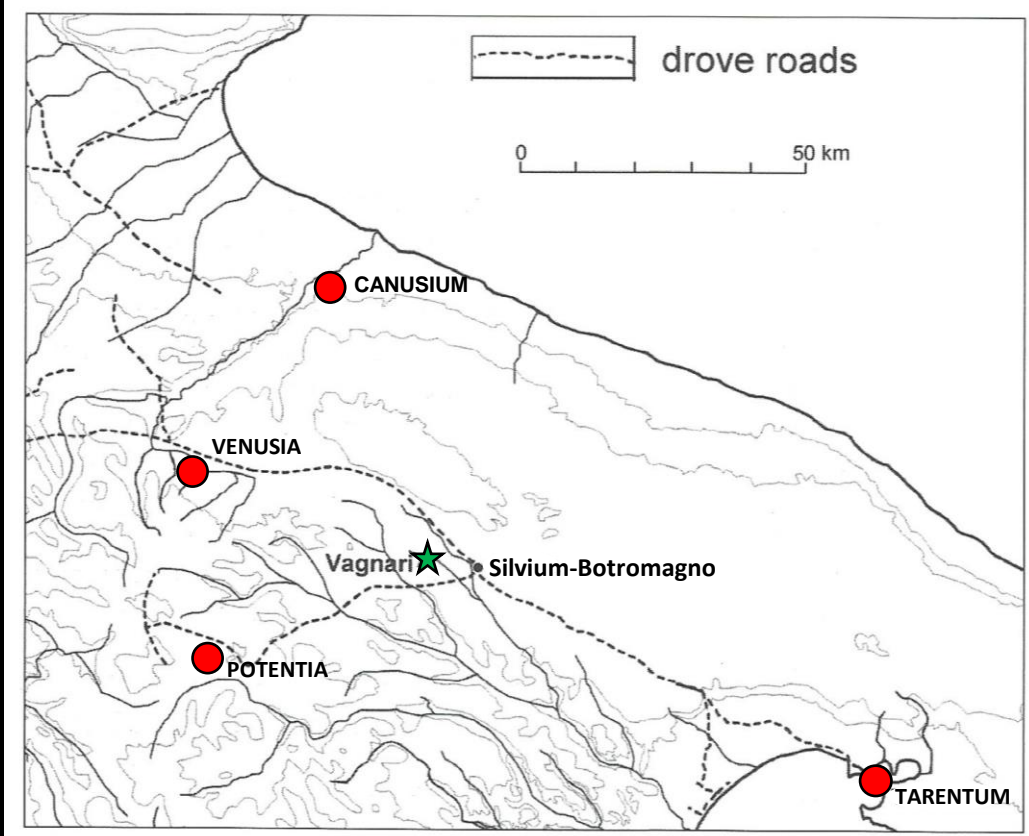
FTW, G, B



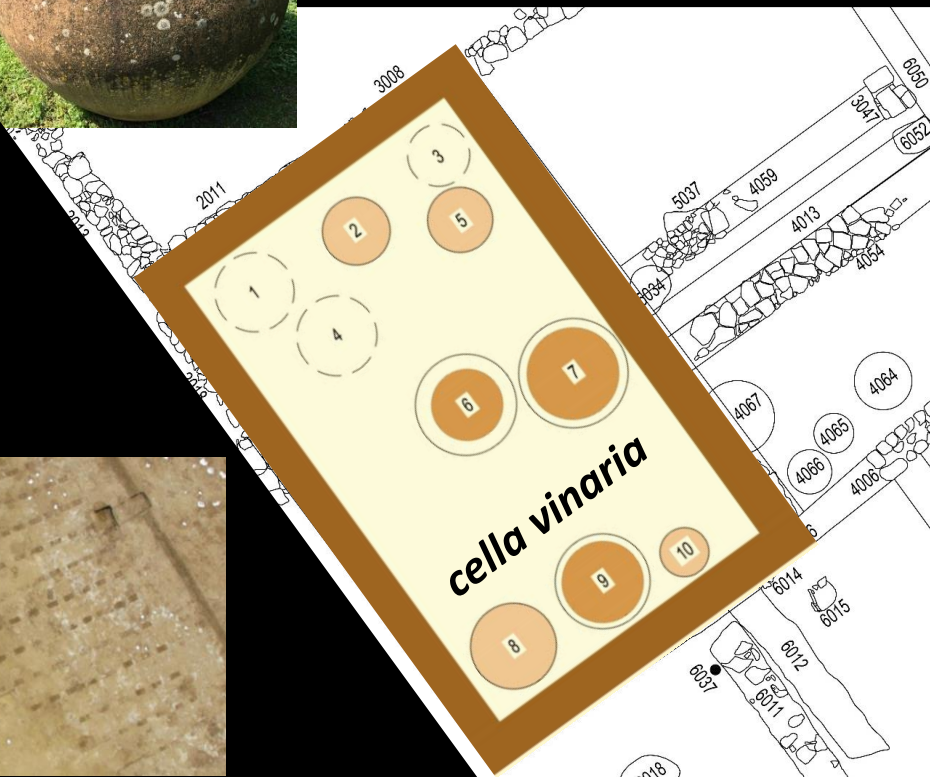


Hence, flocks of sheep are driven all the way from Apulia into Samnium for summering, and are reported to the tax-collectors, for fear of offending against the censorial regulation forbidding the pasturing of unregistered flocks.

Varro, *Res Rusticae* 2.1.16



Dolia defossa









La Terracotta e il Vino



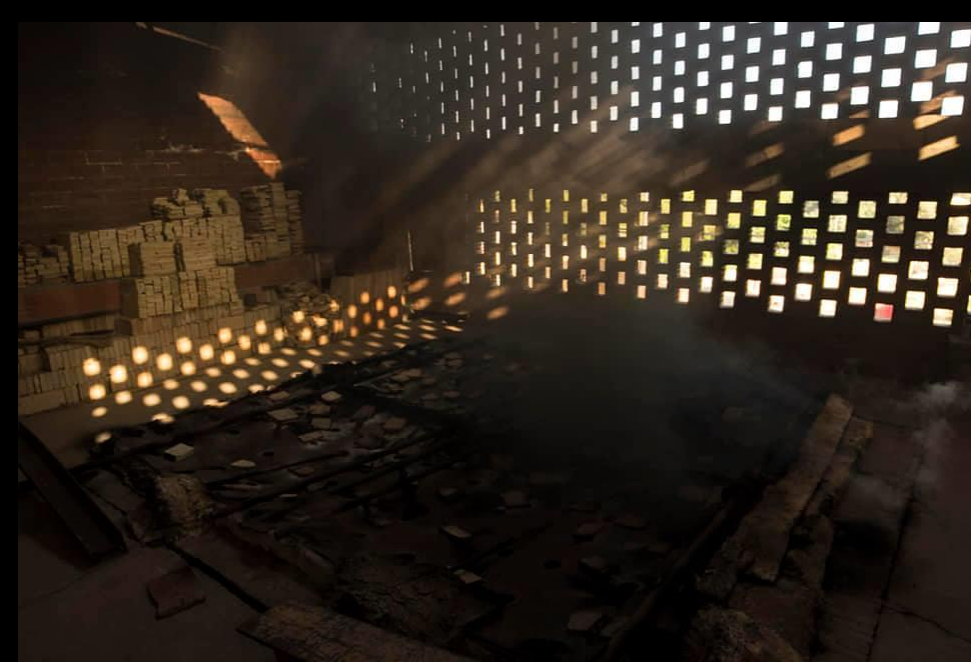
After making the base of the coil-built *dolium*, it must dry for a day. Then, it is possible to attach another coil and add 10-15 cm daily.



It takes between 15 and 20 days to make a 500-litre *dolium*. The *dolia* need to wait for a month in a storage room to be dry enough for kiln firing.

Kiln, 1000°C, holds 4 *dolia* of 800 litre capacity.

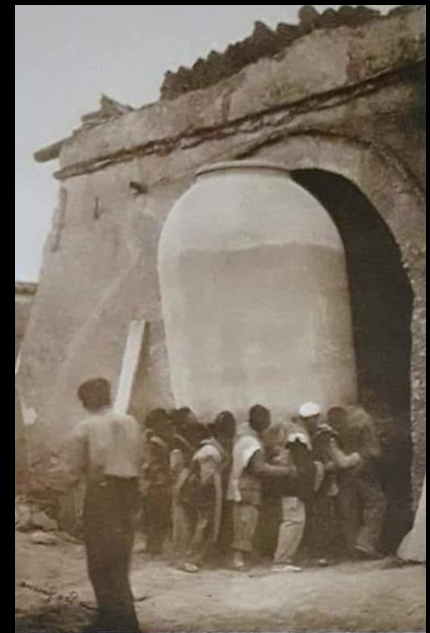


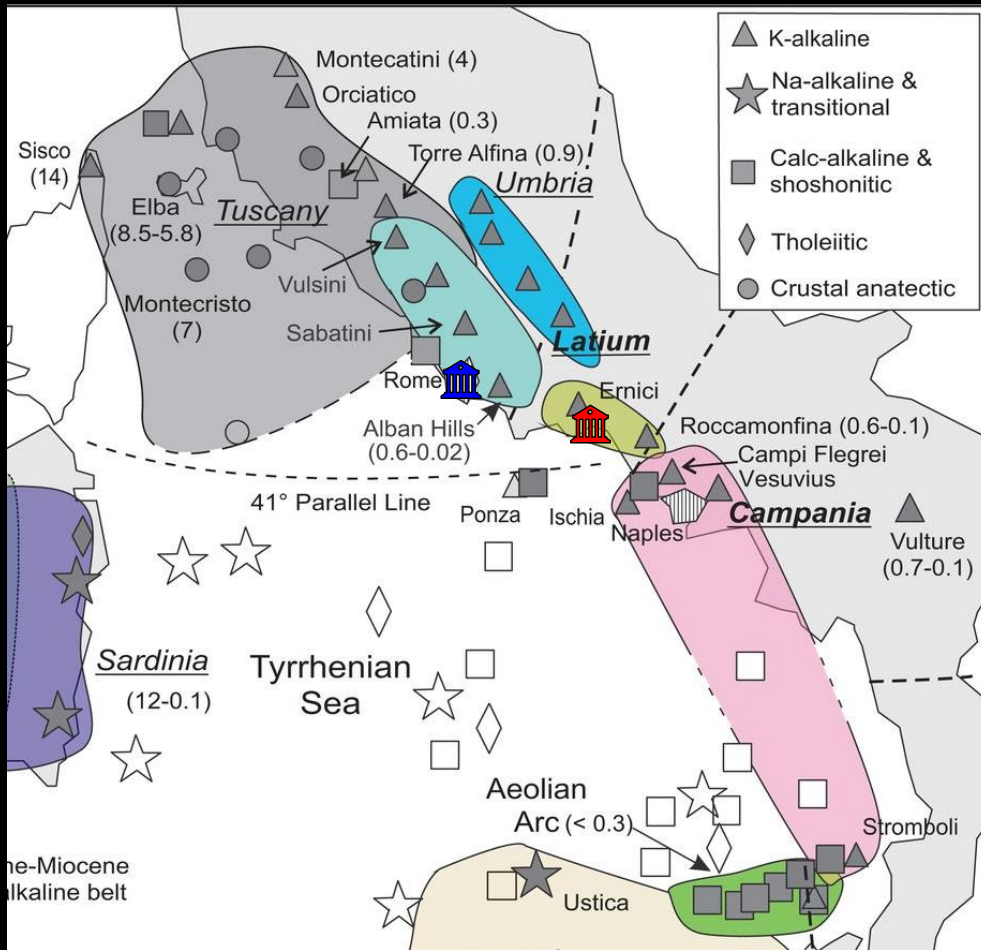


CELLA VINARIA
ARCHAEOLOGICAL
PARK (TEIÀ, MARESME,
BARCELONA)

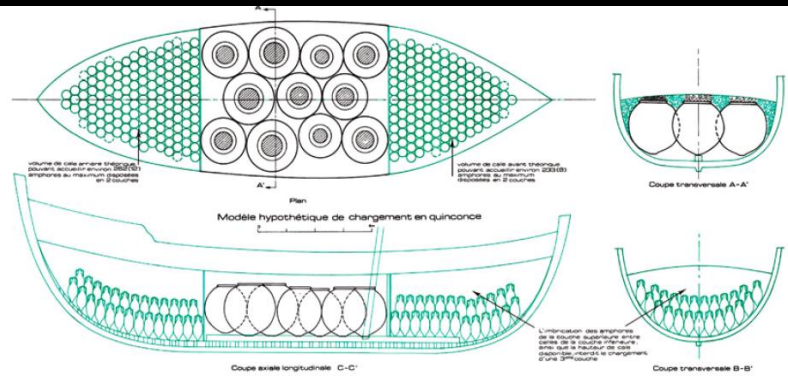
[#CellaVinariaproject](#)
[#CellerRomaVallmora](#)

[@cellavinariaproject](#)

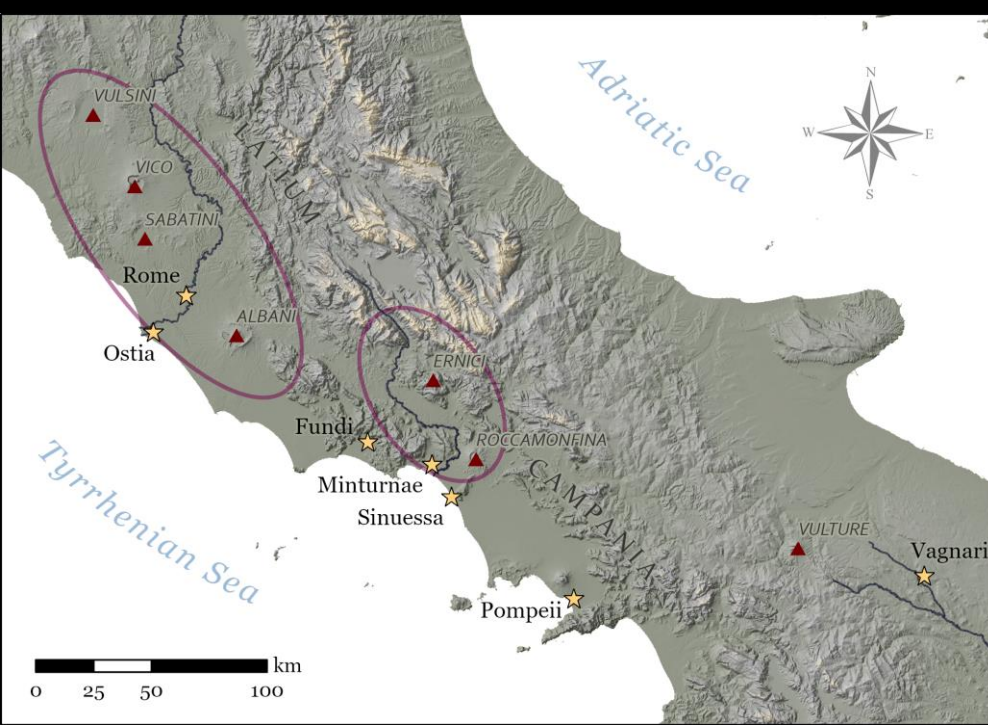




Minturnae on the *Liris* (Garigliano) river. In the distance the mountains of the Ernici-Roccamonfina magmatic province.



TUM



Minturnae





- ⌘ Grands crus classés
- * Grands crus
- Cépages
- Façons culturelles et sols
- ▲ Autres mentions

Garigliano



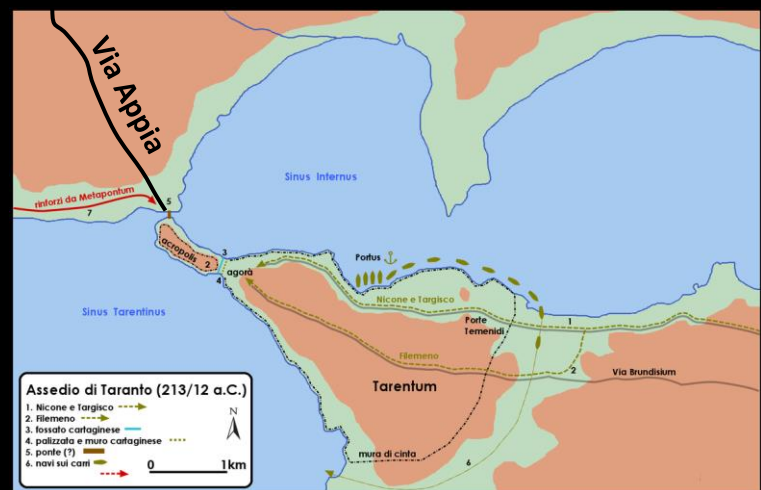
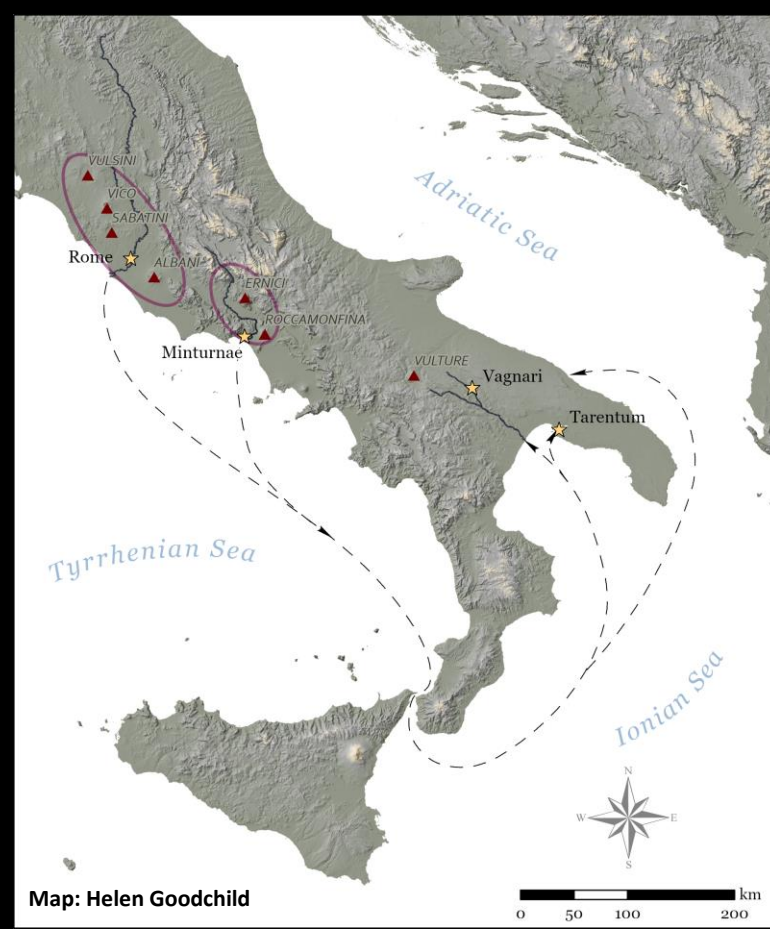
Tiber

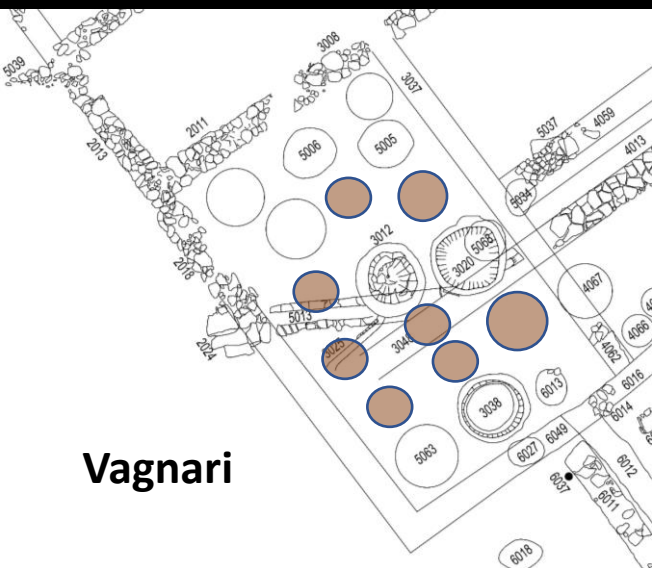


Bradano

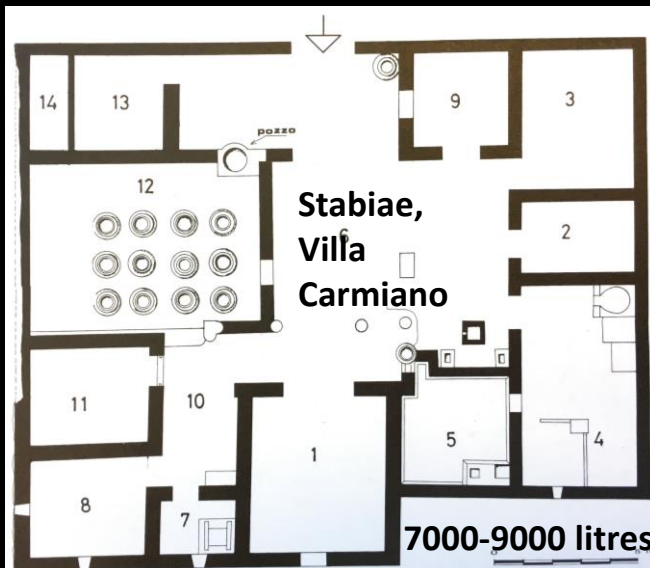


Brindisi



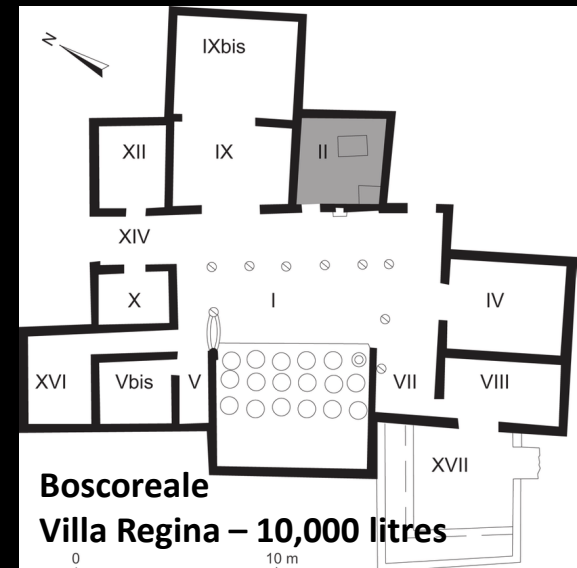


Vagnari



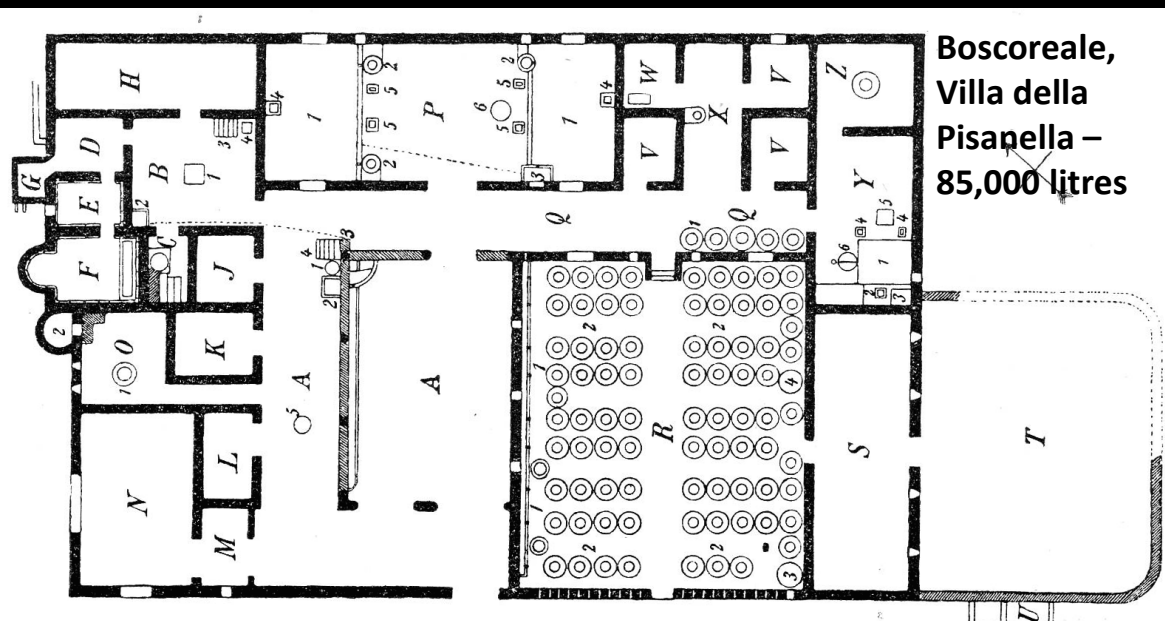
Stabiae,
Villa
Carmiano

7000-9000 litres



Boscoreale

Villa Regina – 10,000 litres



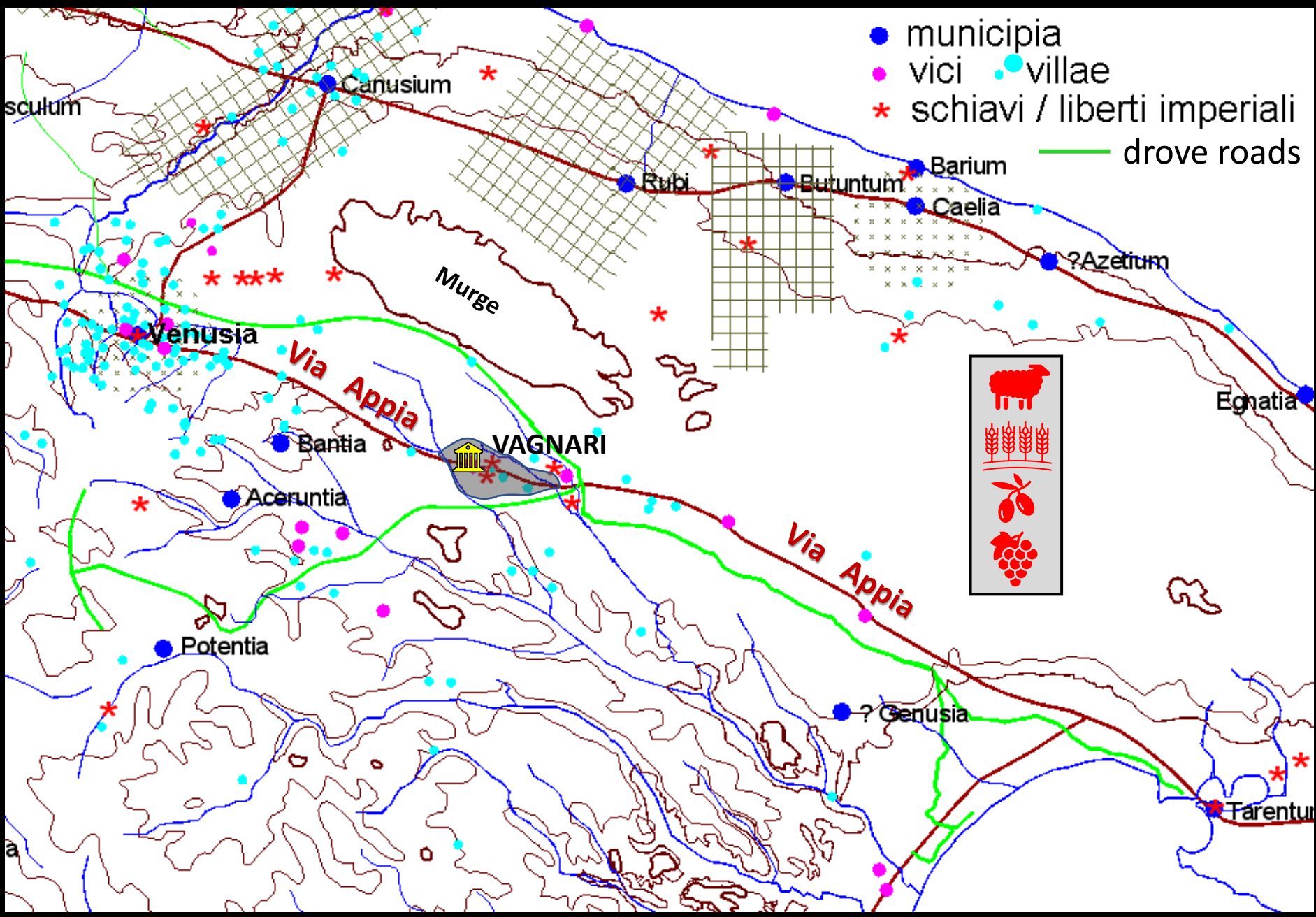
Boscoreale,
Villa della
Pisapella –
85,000 litres

Comparative sizes and
capacities of *cellae vinariae*

1 *iugera* = ¼ hectare

sextarius = 546 ml







The British Academy

THE NATIONAL ACADEMY FOR THE HUMANITIES AND THE SOCIAL SCIENCES



The University Of Sheffield.



UNIVERSITY of York



Social Sciences and Humanities
Research Council of Canada
Conseil de recherches en
sciences humaines du Canada

Canada



Rust Family Foundation

